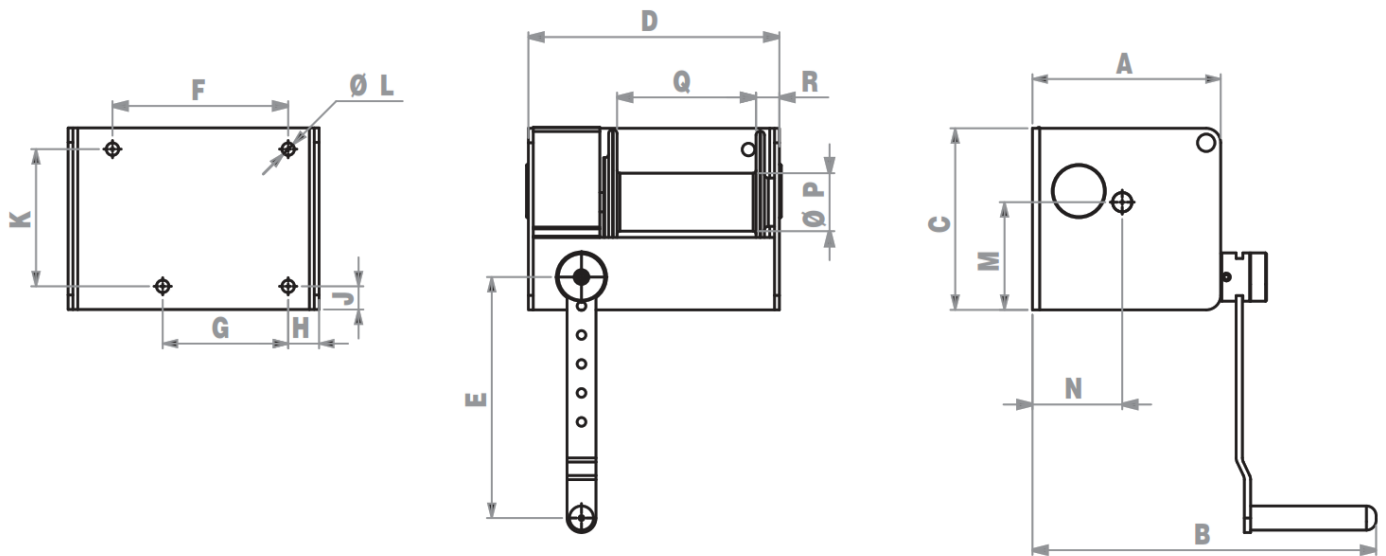


TECHNICAL CHARACTERISTICS

- Drum and gear wheel mounted on bronze bearings.
- Double braking safety by self-locking wheel and screw system and use of pawl brake with double spring.
- Rigid frame with painted mechanical parts and drum.
- Drum disengageable by easily accessible lever with safety device preventing disengagement when carrying a load.
- Users and gears protected by ergonomic cover, removable for maintenance.
- Simple, fast cable fastener.
- Variable-length control crank handle (6 adjustment positions) allowing user to either apply maximum control force, or perform rapid cranking for small loads or rewinding.
- Self-locking crank handle adjustment knob for maximum user comfort and safety. Allows adjusting crank handle or removing it to prevent operation of winch.
- The TS winch can be secured by 4 points on a vertical mounting plane.
- Easily transportable by cross bar.



WLL (kg)	Dimensions (mm)															
	A	B	C	D	E ⁽¹⁾ min/max	F	G	H	J	K	ØL	M	N	P	Q	R
250	167	332	150	202	100/250	137	100	26	13	118	4xØ11	89	80	60	99	24.5

⁽¹⁾ by step of 30mm

WLL (kg)	Wire rope			Effort on handle ⁽²⁾ (kg)	Lift per turn of handle ⁽³⁾ (mm)	Weight without wire rope (kg)
	Ø (mm)	Max capacity	Number of layers			
250	5	20	5	10	21	11

⁽²⁾ at last winding layer with maximum crank length (E_{max})

⁽³⁾ at last winding layer

APPLICABLE STANDARDS

- Complies with machinery directive 2006/42/CE.
- Winch undergone all breaking and endurance tests according to EN13157:2004

